



[www.kings-group.net](http://www.kings-group.net)

488 Bethnal Green Road

London E2 0EA

Tel: 0207 613 2121

**Wickford Street, London, E1 4HW**



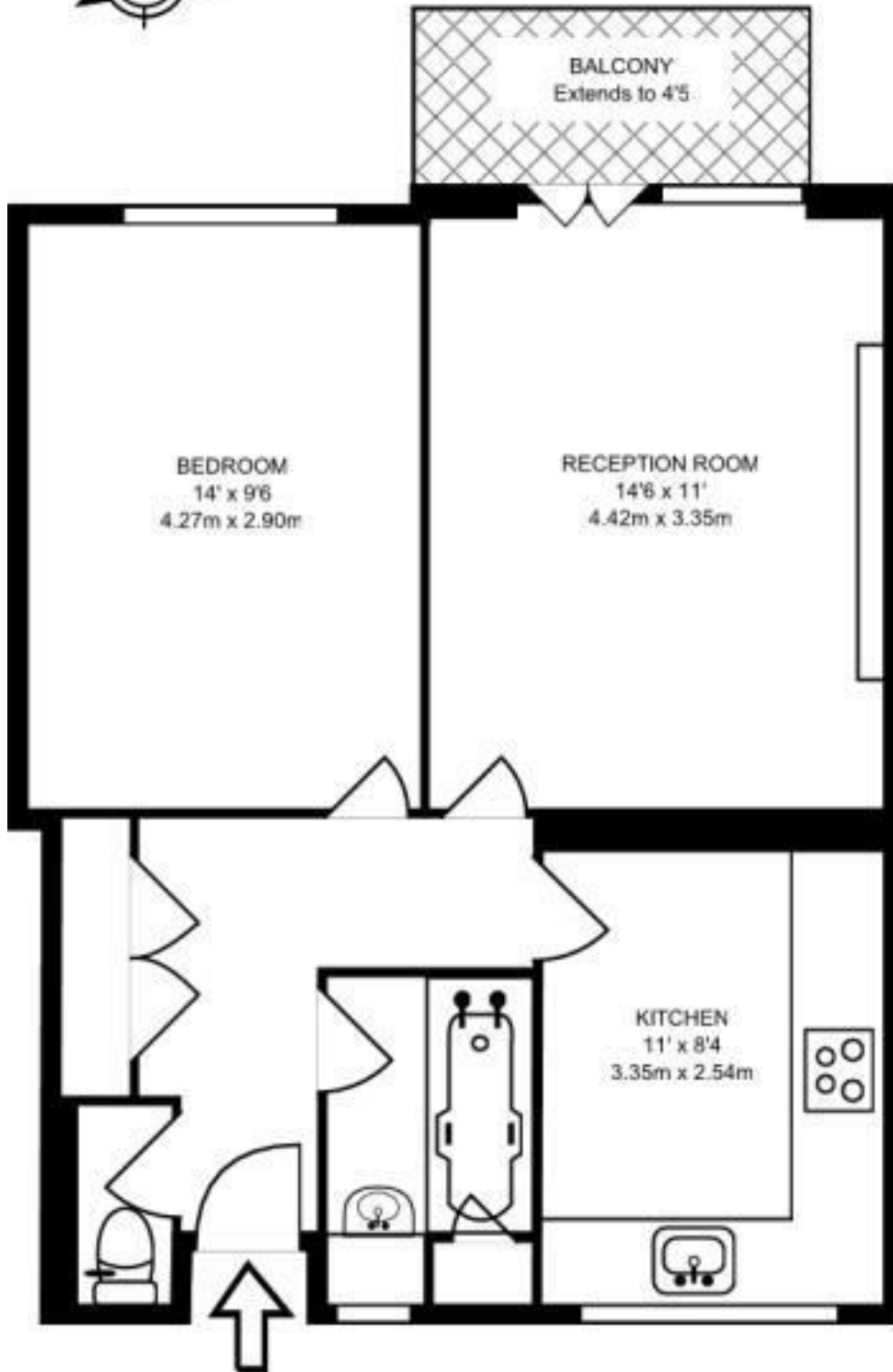
**£1,700 Per Month**

\*\*\* NEWLY REFURBISHED 1/2 BED FLAT\*\*\* This fantastic property comprises of a, separate kitchen, 2 LARGE DOUBLE BEDROOMS. SEPARATE WC FULLY FURNISHED. IMMACULATE CONDITION. Conveniently situated within a FIVE MINUTE WALK to Bethnal Green STATION (Central line and overground) 10 MINUTE walk to trendy Shoreditch and Brick Lane.

\*\*This Property has no living room\*\*

BOOK A VIEWING NOW TO AVOID DISAPPOINTMENT





Energy Efficiency Rating		
	Current	Potential
Very energy efficient - lower running costs		
(92 plus) <b>A</b>		
(81-91) <b>B</b>		
(69-80) <b>C</b>		
(55-68) <b>D</b>		
(39-54) <b>E</b>		
(21-38) <b>F</b>		
(1-20) <b>G</b>		
Not energy efficient - higher running costs		
<b>England &amp; Wales</b>	EU Directive 2002/91/EC	

Environmental Impact (CO <sub>2</sub> ) Rating		
	Current	Potential
Very environmentally friendly - lower CO <sub>2</sub> emissions		
(92 plus) <b>A</b>		
(81-91) <b>B</b>		
(69-80) <b>C</b>		
(55-68) <b>D</b>		
(39-54) <b>E</b>		
(21-38) <b>F</b>		
(1-20) <b>G</b>		
Not environmentally friendly - higher CO <sub>2</sub> emissions		
<b>England &amp; Wales</b>	EU Directive 2002/91/EC	

